



THE  
**SOUTHSIDE**  
**A's**  
SOUTH METRO ATLANTA, GA  
MODEL A RESTORERS CLUB  
Chartered March 1989  
MAFCA Chapter - Chartered May 2014



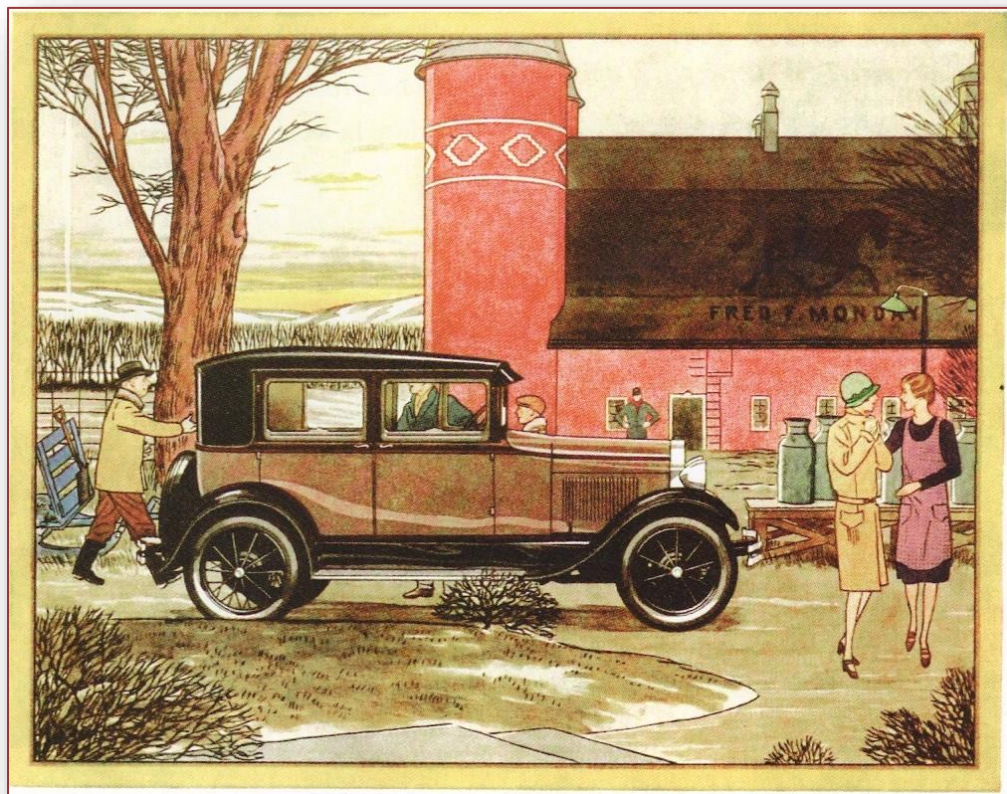
# Newsletter



MARC Newsletter of the Year - 2013  
MAFCA Certificate of Merit - 2015, 2016  
MARC Award of Highest Achievement - 2014, 2015, 2016

November, 2017

Volume 10, No. 11



“Happy Thanksgiving on the farm.”

**Southside A's**  
**2016 Board of Directors\***

**Officers:**

Director: Jim Wingo\* 404-683-7344  
[nosomi2@gmail.com](mailto:nosomi2@gmail.com)

Vice-Director: Pat Tyler\* 706-594-4610  
[pat@patpamtyler.com](mailto:pat@patpamtyler.com)

Rec. Secretary/ Corr. Secretary:  
Kathy Huey\* 770-328-4228

[kkhuey@gmail.com](mailto:kkhuey@gmail.com)

Treasurer: Cheryl Simpson\* 770-463-5833  
[simp94@bellsouth.net](mailto:simp94@bellsouth.net)

Past Dir./Advisor: Jason Carne  
[28modela@att.net](mailto:28modela@att.net)

**Committee Chairpersons:**

Newsletter: Gwyneth Shotwell\*  
(Mike Shotwell, unpaid consultant)

Tech Chair: Tom Romine\*

Membership: Jim Johnston

Activities Director: Dick Carne\*

Historian/Scrapbook: Ann Hunter

Mileage keeper: Pat Tyler

Website Team:

Webmaster: Pat Tyler

Art Direction: Mike Shotwell

**Visit our website!**

**[Southsideas.com](http://Southsideas.com)**

**2017 Southside A's Club Events**

November 11	Family Farm Day - Slay Farm, Ala.
November 12	SSA's Annual Business Meeting
December 2-3	Eufaula, AL Christmas Home Tour
January 6, 2018	Twelfth Night Post-Holiday Party

**2017 Events of Interest**

November 17-19	Moultrie Swap Meet
----------------	--------------------

**Editor's Note:**

Happy Thanksgiving, everyone! We finally got some cold weather to urge the trees to give us some color, and recent fall winds are really making it feel the season.

Look inside for info on our Business Meeting Nov. 12, Family Fun Day on Nov. 11 at Slay Farm in Alabama, and recaps of last month's activities.

Keep enjoying your A's with these still-mild, lovely days, and if you take a fun outing, share it with us in the newsletter!

**SPECIAL NOTE:** As you can see, our activities calendar is shrinking as we approach the end of the year. Please consider what tours and events you'd like to see, or places to visit and let Dick Carne hear from you!  
[dickcarne@gmail.com](mailto:dickcarne@gmail.com)

Also plan to take the plunge and lead a tour yourself! For example, it could simply be a lovely route to the state park in Newnan for a picnic lunch. We'll help you figure it out.

--Gwyneth Shotwell



## Happy Birthday!

4<sup>th</sup> - Mike Shotwell  
8<sup>th</sup> - Walt Smith  
9<sup>th</sup> - Taylor Merrill  
11<sup>th</sup> - Rick Minter  
14<sup>th</sup> - Ken Turner  
14<sup>th</sup> - Ken Riley  
17<sup>th</sup> - Liz Romine  
18<sup>th</sup> - Joe Fagundes  
18<sup>th</sup> - Terry Atkins  
19<sup>th</sup> - Jenny Smith  
20<sup>th</sup> - Kathleen Willingham  
25<sup>th</sup> - Benny Bohanan  
26<sup>th</sup> - Tommy Davis



## Happy Anniversary!

17<sup>th</sup> - Joe & Betty Fagundes  
18<sup>th</sup> - Phil & Kathie Meyers  
21<sup>st</sup> - Tom & Liz Romine  
26<sup>th</sup> - Pat & Pam Tyler



## Notes from Our Director

October is finished but it seems we have a few more good days ahead before Old Man Winter sets in, let's use them wisely. We had a lot of events during October including participation in the 11th Annual Sweet Home Alabama Tour with the Central Alabama Model A Ford Club. Some of our members also attended the Outer Banks Tour with the Southeastern Touring Group. Finally, we had an excellent technical meeting the end of the month on how to re-build water pumps. Special thanks to Kathy and Fred Huey for hosting the meet. The tech meeting was well attended and I think we all learned a lot from Tom Romine's overview of how to rebuild our A's water pumps. If you missed these events, you missed some great fun.

November is the month that we all give thanks for our great blessings. I think we all know how blessed we are to have such a great hobby and a group of friends with the same interests. It keeps us engaged and looking forward to the next great adventure. November is also the month that we have our business meeting and this year we have a new one day outing to visit a 1930's Period Farm hosted by Frank and Mary Helen Benford. Look for more details on this outing scheduled for November 11th. Our business meeting will be held on November 12th, this is the most important meeting the club has during the year as we elect next year's board of directors. We will have plenty of door prizes and fellowship. So please make sure you mark your calendar and come on out. Please RSVP directly to me by November 5th that you'll be there so I can coordinate with our restaurant.

See you down the road,

-Jim

---

### **SUNDAY, NOVEMBER 12 - ANNUAL BUSINESS MEETING!**



Nikko's Japanese Restaurant, Tyrone. 6:30. Election of Officers, great food, fellowship, and more!

RSVP by Nov. 5<sup>th</sup> to Jim Wingo or Gwyneth Shotwell.  
See you there!!



## SWEET HOME ALABAMA



Here are just a few representative photos of the Eleventh Annual Sweet Home Alabama Tour October 19-21, 2017, a hub tour from Tusculumbia, Alabama, which can only be described as a great success. We had 61 Model "A" Fords registered and members of 20 Model "A" Ford clubs from Alabama, Florida, Georgia, Indiana, Kentucky, Michigan, Mississippi, North Carolina, Oklahoma, South Carolina, Tennessee and Texas touring with us this year. Wow! The Southside A's were well-represented with some twenty members; a great turnout.

Thursday morning we were off on the Natchez trace for a journey along a trail full of history, a visit to the Tupelo Automobile Museum, lunch, and a self-guided tour of local Tupelo attractions. Our first stop was the Tupelo Automobile Museum with over one hundred cars that dated back to 1886. One distinctive display had nothing to do with cars and everything to do with Tupelo: A wall with myriad posters of Elvis Presley, arranged to spell out E-L-V-I-S.

After the museum we were free to lunch and tour on our own in the town. Elvis's birthplace was a popular and fascinating stop, while others enjoyed the local Hardware Store, Johnnie's Drive-In (an Elvis favorite), the Mississippi Final Stand Civil War Center, and the Natchez Trace Parkway Visitors Center.

At the end of the day members returned to the motel individually or in club groups and enjoyed a motel manager's social. After the social members dined at one of the many fine restaurants in the area. Later in the evening a sing along was held in the motel lobby by club members Dan Nelson guitar, Ron Marko fiddle and Gary Wheat on the piano. The sing along was held every evening.



Friday morning we headed off to Lawrence County, Tennessee, enjoying beautiful scenery along the way. Our first stop was the Big Red Store, a general store that was open from 1902 to 1950. It was renovated in 2006 and is now a museum open by appointment only. It contains many original items, including store receipts, memorabilia from local residents, the soda fountain, clothing, and even a child's coffin; one-stop shopping back in the day.



We continued on back county roads that truly felt like being in the 30's, including fording a creek to arrive at our second stop, the Mt Zion Methodist Church, cemetery and a noted swinging bridge. The Church was built in 1885 after the original log one burned and is a National Historic Landmark. Several brave souls ventured out on the bridge that was definitely not built yesterday. Reportedly, the view down the creek was quite beautiful.



For lunch we dined nearby at Crockett's Mill Restaurant in David Crockett State Park, overlooking scenic Lindsey Lake. Next on the agenda was a wagon tour of the Amish country which included several stops at local homes and farms to see the variety of industries these resourceful people engage in for their livelihoods. There are about 250 families in the area, and they continue to expand.

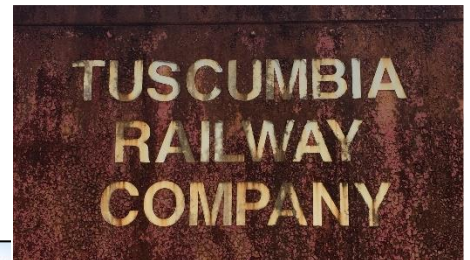
The route back to the hotel took us down another section of the Natchez Trace – unending beauty with nary a gas station, traffic signal or anything commercial in sight; a magnificent treasure.



Our last day, Saturday, took us to even more attractions in this very interesting area of northwest Alabama. Perhaps little known is the fact that this area has been, and continues to be, a significant spot in the music industry, not only for its multiple recording venues, but also simply for the vast array of artists, producers, writers and others that hail from Alabama. The Alabama Music Hall of Fame tells the stories of this rich heritage, with the likes of studio recording equipment from Sam Phillips's Sun Records, a touring bus for the group Alabama, sheet music and lyrics written on napkins, to a vintage juke box playing hundreds of hits.



The Tuscumbia Railroad Museum marks the coming of freight transportation followed by passenger service for this corner of the state. One of the items on display is a restored, elegant carriage that was owned by Capt. Keller, Helen Keller's father; it is said that he arrived at the station in the carriage to pick up Anne Sullivan, the remarkable teacher who aided Helen in so many ways. Her home, Ivy Green, is another significant feature of the town.



Gen. Joe Wheeler's home, Pond Spring, in Lawrence County, was our final stop. Owned by the Wheeler family until its donation to the state of Alabama in 1994, all the artifacts in the home are original, creating a living museum. Our guide, the young director of the museum, is imbued with everything about the remarkable life and achievements of Gen. Wheeler, and passed that enthusiasm onto us during her wonderful tour.



The Farewell Dinner, held at Too Fat Sisters, was a congenial evening with tasty food, great friendly service, and the fabulous door prizes the Central Alabama club has become famous for. The 50/50 drawing is another regular draw, and on this occasion the lucky winner was Southside A's member, Gwyneth Shotwell.

A Special thanks to the following CAMAFC members who helped make this tour a success: David Miller, Gary & Penny Wheat and her sister Ann Marshall, Gerald and

Sylvia Grizzard, Cecil Freeman, Paul and Marie Majerick, and Ken Garrett. Your efforts resulted in one of the best tours yet. Thank you! (and Thanks to Paul and CAMAFC for help with, and photos for, this article!)

**And mark your calendars for October 17-20, 2018, for the 12<sup>th</sup> annual Sweet Home Alabama Tour!**



## ELECTION OF OFFICERS / BOARD FOR 2018

Hello Members,

You will recall that at our last Business Meeting in November, 2016, the club approved various revisions to the By-Laws, which include slight alterations to the make-up of the Board. Since these changes were approved at the same time as the 2016 election cycle, they become active as of this current election cycle. Following are the features of the revised By-laws as they pertain to the Board:

The Board, made up of a total of seven (7) people, includes Officers: Director/President, Vice-Director/President, Secretary/Corresponding Secretary, and Treasurer, as well as the standing positions of Immediate Past Director/President and Newsletter Editor. In addition, one at-large member is nominated by the Committee, which rounds out the Board of seven.

Our Nominating Committee, consisting of Tom Romine (chairman), Dick Carne and Gwyneth Shotwell, recommends the following slate of Officers/Board Members to serve in 2018: (Note that the standing position of Immediate Past-Director/President continues to be filled by Jason Carne, and Newsletter Editor continues to be Gwyneth Shotwell)

**Director/President:** Jim Wingo

**Vice-Director/President:** Pat Tyler

**Secretary/Recording Secretary:** Kathy Kelly-Huey

**Treasurer:** Cheryl Simpson

**Member-at-large:** Tom Romine

**The slate will be presented at the annual Business Meeting on November 12, 6:30 PM, at Nikko's Restaurant in Tyrone. Nominations from the floor, if any, will be entertained at that time.**

---

**Featured Photo of the Month:** (As with 2016, we will be featuring photos that glorify the Model A in all its varied styles, and enhanced by beautiful or intriguing settings. Keep track of your favorites throughout the year and we will once again take a tally and announce the winner for "Miss 2017.")



**NOVEMBER**

## FAMILY DAY AT THE FARM

### SLAY FARM, Chambers County, AL – Saturday, Nov. 11



Family Day at the Farm is an event held annually at the Slay Farm in the White Plains community in Chambers County, Alabama, about half way between Roanoke and Lafayette on US highway 431. This year the event is **November 11, 2017 from 9:00 am CT to 3:00 pm CT.** The Slay family opens the farm to the public for a day of socializing and fun, and the event is hosted by the Chambers County Farm-City Committee.

We plan to have a caravan on Model A's travel over together, and set up a display for everyone to enjoy.

Visitors may tour the farm at their leisure, and enjoy some traditions of farm life such as hand-churning of butter (provided the cows are generous that day); you might even get a chance to try your hand at milking! There will be a farm animal petting zoo, pony rides, and possibly a horse shoeing demonstration by one of the Slay sons, a professional farrier. Mrs. Slay usually bakes up some biscuits, and they usually go pretty fast. Hamburgers, hot dogs, chips, cookies, soft drinks and water for lunch is available at no cost.

You won't want to miss the farmhouse on the property that has been restored to 1930s rural style, and serves as museum featuring authentic items from the period, giving a sense of how rural life was like in the 1930s. It also includes an outhouse (non-working) which is always fascinating to young kids.



## Also on November 11th





## OCTOBER TECH MEET - WATER PUMPS

On October 28th, we had a technical meeting to explore the particulars of how to rebuild the Model A water pump. Fred and Kathy Huey hosted the group at their home in Tyrone. Tom Romine took the group through the steps in disassembly and the method in re-assembly with the currently available leafless water pump kits. Insight was also given to the various housings and how some of these differ. One of the main issues encountered was how easily it is to bend the housing during the disassembly process. The lesson, don't press the shaft too hard or you'll end up with nothing to assemble!



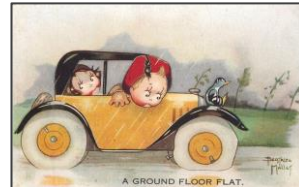
**Members in attendance:** Tom Romine, Fred Huey, Jim Wingo, Johnnie Hobbs, Pat Tyler, Terry Atkins, Tom Miller, Dick Carne, Bob Simpson, Charlie Biggs, Jim Johnston, Taylor Merrill, Don Pelham, Ray Besch and Frank Benford. (And Helper, the Dog)

## Treasurer's Report

Balance as of August 31, 2017:	\$5,446.26
Deposits: Dick/Jane Tour	\$199.25
Expenses: Dick/Jane Tour	<u>\$2,925.90</u>
Balance as of September 30, 2017:	\$2,719.61

**Sign at a Tire Shop in Milwaukee:**

"Invite us to your next blowout."



## **EUFAULA CHRISTMAS TOUR OF HOMES**

**DECEMBER 2, 2017**



Be sure to sign up for the upcoming Christmas Tour of Homes in historic Eufaula, Alabama on December 2. Start your holiday off right! If you haven't done so already, contact the Quality Inn to see about a reservation. The deadline has passed for the group rate, but you likely can still get a room.

For further information, contact Dick Carne: [dickcarne@gmail.com](mailto:dickcarne@gmail.com)





## What's New with MAFFI?

At this year's annual Board of Directors Meeting, we were excited to have Olle Bergstrom accept the position of International Liaison for MAFFI. This newly created position is intended to provide greater exposure for our museum and to gain knowledge of activities in manufacturing and sales for the Model A outside of North America.

This year we began building an exhibit we have titled "A-Round The World". We have acquired memorabilia, a right hand drive Deluxe Phaeton and have produced signage to explain the history of Ford Model A production and marketing in Europe, Asia and South America. We are looking forward to having Olle help expand our exhibit content and generate greater international enthusiasm for our museum.

If you weren't able to be at Model A Day this year, plan a trip to see the Museum. There is something new to see and explore not only at our facility but at the Gilmore as well.

Thank you for your continued support of MAFFI!

John Begg,  
MAFFI President

---

## FASHION FINDS...

### The Princess Silhouette is Important for Winter

By Judy Lewis (from MAFCA website)

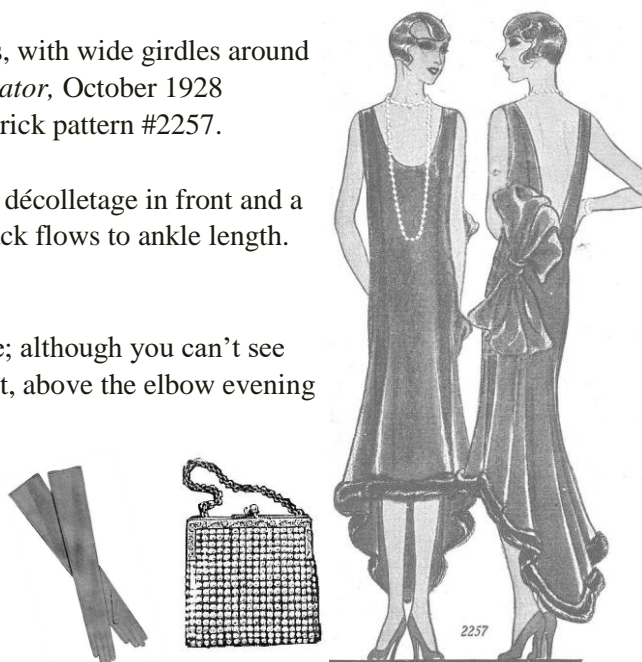
For all the ladies, including myself, who do not find the 1928 dresses, with wide girdles around the hips or belted around the hipline, flattering to their figure, *Delineator*, October 1928 featured the princess silhouette evening gown. The dress was a Butterick pattern #2257.

It outlines the figure and flares outward at the hem; it has the deep U décolletage in front and a deeper V in back and features a huge bow at the side. The hem in back flows to ankle length. This silhouette is very new and extremely smart.

The model shows spike heel pumps and a long single strand necklace; although you can't see them she would be wearing matching earrings. To complete the outfit, above the elbow evening gloves, evening bag and wrap would be appropriate.

16 to 22 button silk gloves with 3 gores. The button count is not about how many buttons it has but how long the gloves are.

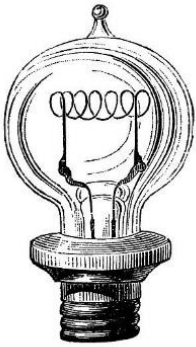
Evening bag of white or black silk moiré with high grade imitation diamonds. *Sears S/S* 1928.





## Jim's Tech Tip

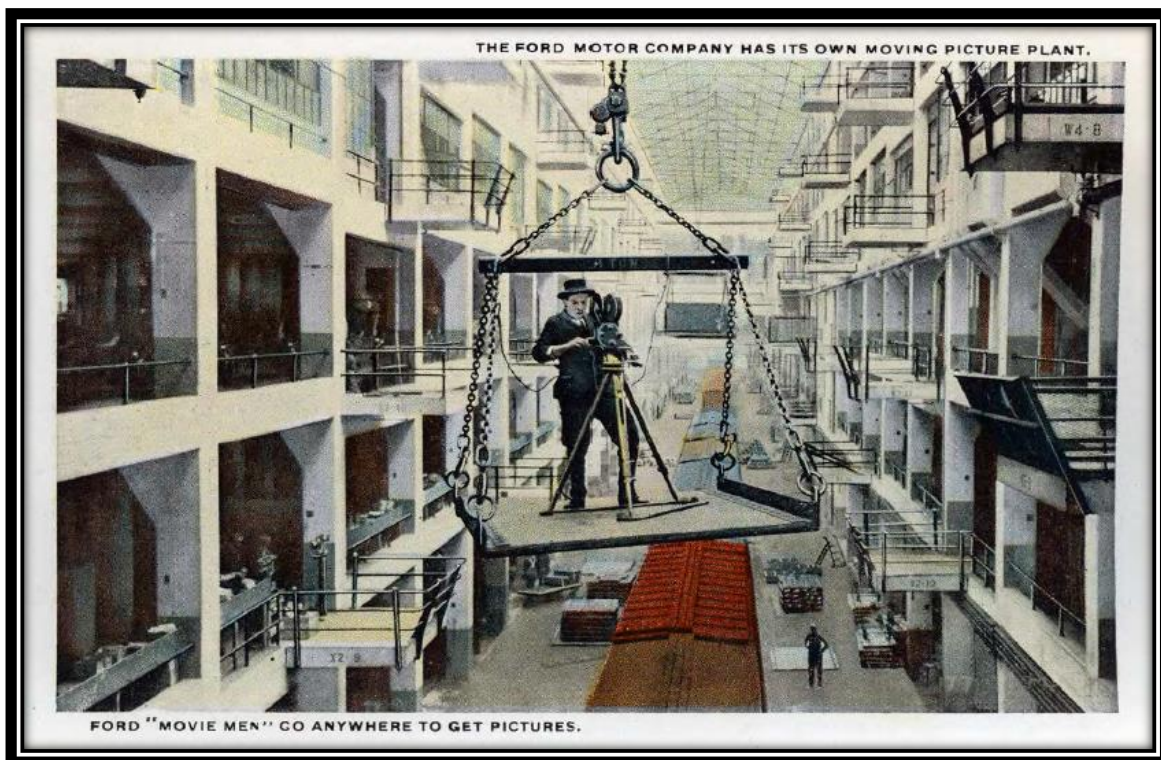
by Jim Cannon, 2017 MAFCA Technical Director



I have always found the instrument panel light on my Model A to be too bright (and too hot! Ouch). I would turn mine on for a few seconds, and then turn it right back off. Here is a simple fix: put a 12-volt, 3 candlepower tail light bulb in your 6 volt Model A instrument panel. That would be a #67 bulb, available at any auto parts store. Instead

of being so bright, it will glow a nice, soft orange color because it's operating at half of the voltage it was designed for. Once your eyes get used to the dark, it gives all the light you need to see the instruments. You will gladly leave it on for the entire night drive. PS – the bulb number to do this on a car that has been converted to 12 volts is a #623 bulb. Harder to find, usually special order.

## BLAST FROM THE PAST.....



## 2017 National Events

### MAFCA National Awards Banquet

Oklahoma City, OK

November 29-December 2, 2017

Hosted by the Oklahoma Sooner Model A Club.  
For more information, visit [soonermodela.org](http://soonermodela.org).



## Looking Ahead to 2018



### MAFCA National Meet

Reno-Sparks, NV

June 24-29, 2018

Hosted by the Northern California Regional Group.  
For more information and Early Bird registration, visit:  
<http://ncrgmafca.com/2018MAFCAConvention/2018index.html>

*Are your whiskers  
When you wake  
Tougher than  
A two-bit steak?  
Try....*



## Items For Sale

**FOR SALE:** 1931 Model A Deluxe Tudor. All original, black on black. Good condition with extra parts. Bought from Roy Frost. **Asking \$14,000**



Call Doug 256-237-5802

**FOR SALE:** 1931 Deluxe Model A Roadster. Indented firewall. Runs and drives. **Asking \$12,500.** Contact: Gary Doner - [gdoner4822@comcast.net](mailto:gdoner4822@comcast.net) or 239-860-2726.



**FOR SALE:** 1929 Fordor Briggs body. High compression head Lebaron Bonney upholstery, trunk, car cover and more. This car is all steel, no fiberglass. I am asking **\$14,500**. If interested call **Don Murdock at 404-401-1903**



**FOR SALE:** A 1930 Model A Ford Coupe with rumble seat. This car belonged to my brother who passed away last month. The car is in my possession as he left no wife/children. The car is running, has hydraulic brakes. Glass/interior is in good condition and paint is in fair condition. Car is also a 12 volt system. Please call for more info. Pictures can be provided upon request. Asking \$10,000. **Larry Pettis, 229-344-3413.**

**FOR SALE:** 1930 Georgia License Plates. Unrestored and Restored. Singles, pairs, and



sequentially numbered plates available. **Email Jim Hunter at [ytguy@aol.com](mailto:ytguy@aol.com) or call (770) 710-2153**

**FOR SALE:** 1929 Tudor Sedan. A "9" out of 10. Located in Eastman, GA. "Iris" is a great ride. Would like offers around \$14K. Contact: **Bobby Ray Holland - 478-231-8753**



**FOR SALE: THE RESTORER MAGAZINE** 179 issues, 1975-2013. All years are not complete, but all copies are in "as new" condition. **\$500.00** for all, or I may consider discussing other sales. Contact **Jim Langley** at [jrpdl57@gmail.com](mailto:jrpdl57@gmail.com) or call **(706) 289-6014**, Phenix City, AL

**FOR SALE:** 1931 S/W Town Sedan. Nice paint; cranks and runs well. Interior okay, but not show quality. In Oxford, AL. **Asking \$15,000.** Contact: Gerald Grizzard, 256-310-6463, [Gfireman52@aol.com](mailto:Gfireman52@aol.com)

# Bentley's

Antique Auto Service, Inc.

We are a Full Service Shop, specializing in Model A Fords

We offer Award-Winning Paint and Bodywork

Expert Service and a Complete Machine Shop

678-407-1947 [www.mymodela.com](http://www.mymodela.com)

## Enjoy the Drive...

# Club Items


## Shirts and Hats

We have Vendors that supply embroidery for hats and shirts. If you are interested contact Eugene Willingham @ 770-253-6518 or [ewill@numail.org](mailto:ewill@numail.org)

**Remember:** There is almost no limit to what you can have embroidered. Use your imagination, talk to Eugene and see what you can come up

Name Tags are available by contacting Teri Besch at 770-487-9215 or [besch105@comcast.net](mailto:besch105@comcast.net)

**Carden Machine**  
ANTIQUE ENGINE REBUILDING



**Robert Carden**  
Owner  
770.251.9174  
Cell: 678.613.0516  
Email: [rwcarden@bellsouth.net](mailto:rwcarden@bellsouth.net)  
Shipping Address:  
170 Smith Rd • Newnan, GA 30263

*We Only Use New Babbit!*

**Specializing in Model T and Model A Fords**  
CYLINDER BORING • SLEEVING • ALIGN BORING • BALANCING • BABBITING

**Club Banners:** We have designed a Club Banner to display on your car when touring or just to hang in your shop. Call Jim Johnston @ (678) 423-4344 or [jamesrj@charter.net](mailto:jamesrj@charter.net)

**"ONE MILE AHEAD"**  
*Smith and Jones*  
Antique Auto Parts  
60 Wisconsin St., W. Columbia, SC 29170  
803/822-4141 FAX 803/822-8477



Quality Parts  
Same Day Shipping  
Established 1972  
156 Page Catalog  
Order Desk 800-422-1928



[www.snjparts.com](http://www.snjparts.com)

**We've Revolutionized the way you find Model A Parts!**

FOUR CATALOGS TO CHOOSE FROM:  
• Coupe • Pickup • Open Car • Sedan

**CALL & ORDER YOUR FREE CATALOG TODAY**  
**AND ASK ABOUT OUR MONTHLY SPECIAL!**

**1-888-879-6453**  
[www.mikes-afordable.com](http://www.mikes-afordable.com)



**YOUR MOST RELIABLE SUPPLIER OF QUALITY PARTS FOR OVER 15 YEARS!**

*Mike's*  
We Ship Worldwide!



# Invitation to join Model "A" Restorers Club

(Membership in Southside A's requires membership in MARC, as well.)

## MODEL "A" RESTORERS CLUB

6721 Merriman  
Garden City MI 48135  
(734) 427-9050 office  
(734) 427-9054 fax

[modelarestorers@sbcglobal.net](mailto:modelarestorers@sbcglobal.net)

## Membership Application

### 2015 Dues- New or Renewals

US Membership **\$45.00**  US & Canada Air Mail **\$55.00**  International **\$61.00**

**IMPORTANT:** Make checks payable to Model "A" Restorers Club (M.A.R.C.)

All Memberships from outside the U.S. are to be remitted by International Money Orders in U.S. Funds (drawn on U.S. Bank) or credit card. And a personal check drawn on U.S. bank (U.S. funds must stamped on check.)

### CREDIT CARD INFORMATION:

Visa  Master Charge or  Discover Credit Card  American Express  
# \_\_\_\_\_

EXP Date \_\_\_\_\_ CVV2 Code # \_\_\_\_\_ Phone # \_\_\_\_\_  
(Last 3 numbers on back of Credit Card)

Membership # \_\_\_\_\_ E-mail \_\_\_\_\_

Name: \_\_\_\_\_

Address: \_\_\_\_\_

City: \_\_\_\_\_ State: \_\_\_\_\_ Zip: \_\_\_\_\_

I give permission to publish my phone number in the future MARC Membership Rosters:

Yes  No Phone: \_\_\_\_\_

I give permission to publish my email in the future MARC Membership Rosters:

Yes  No Email: \_\_\_\_\_

**With your membership you will receive a club membership I.D. card and the *Model "A" News*, our BI-monthly club magazine. In addition, each member is entitled to a free 40 word classified ad in each issue of our international publication, the *Model "A" News*  
(A good source of parts and information you may need for your car).**

### Model A Restorers Club Purpose:

The purpose of the Model "A" Restorer's Club is to encourage its members to acquire, preserve, restore, exhibit, and make use of the Model "A" Ford vehicles (models 1928-1931) and all things pertaining to the historical information, and to promote the introduction of ideas and fellowship among its members.

### The Southside A's Newsletter:

The **Southside A's Newsletter** is published monthly by the Southside A's Model A organization, members of the Model "A" Restorers Club, and is distributed by the club's members and selected others. Non-copyrighted materials contained herein may be reprinted if credited to The Southside A's Newsletter. Reprints of copyrighted articles must have the approval of the original author. Views expressed herein do not necessarily reflect the views of the Southside A's Board of Directors or the National Model "A" Restorers Club.



# Model A Ford Club of America Membership Application

Name: \_\_\_\_\_

Spouse: \_\_\_\_\_

Address: \_\_\_\_\_

City, State, Zip: \_\_\_\_\_

Telephone: \_\_\_\_\_ Email: \_\_\_\_\_

*I grant MAFCA permission to publish my name and contact information: Yes \_\_\_\_\_ No \_\_\_\_\_*

U.S. Membership \$50 • Canada/Mexico Membership (U.S. Currency) \$60  
International Membership (U.S. Currency) \$70 • International Membership Digital Edition only \$50

**Include six issues of The Restorer magazine!**

*Mail check payable to MAFCA or for Visa/Mastercard:*

Card Number: \_\_\_\_\_ Exp. Date: \_\_\_\_\_ CVV Code: \_\_\_\_\_

Signature: \_\_\_\_\_



Mail to:  
Model A Ford Club of America  
250 S. Cypress St.  
La Habra, CA 90631-5515

